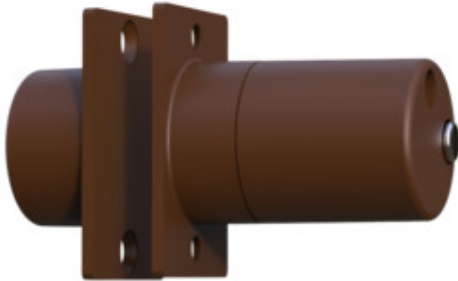


## Flush Magnetic Contact

*Code: FC508/BR/MULTI/G2/EN*

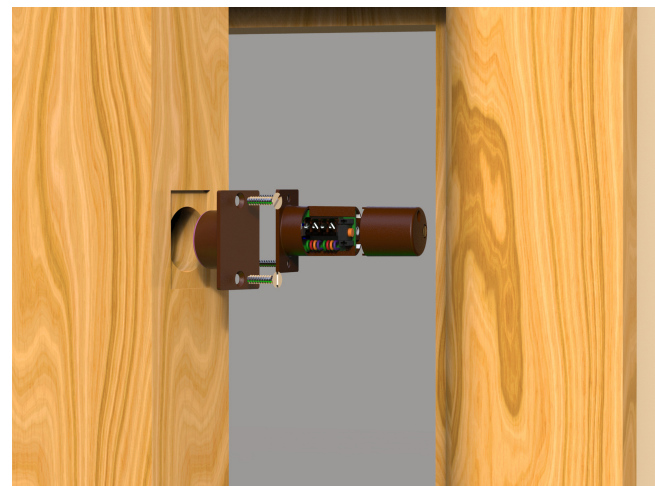
FC508 | Flush Contact | Grade 2 | Brown | Multi Resistor



This flush mounted magnetic door contact can be used in most intruder alarm systems up to and including grade 2 as specified in EN50131-1:2006 and is certified to EN50131-2-6:2008 and environmental class II (for use indoors) by Kiwa FSS. It operates as a normally closed circuit going open when the magnet housing is moved away from the contact housing. This contact can be used on most doors to detect the unauthorised entry of an intruder. It has 4 terminals to allow for the selection of either double pole or EoL configuration and is suitable for use on double door applications, it is also protected against tampering by lid removal.

### Features & Benefits

- Screw terminal block, no junction box required
- Microswitch tamper
- Selectable end of line resistor
- Can use own resistors
- Available in white or brown
- Can be fitted in double pole systems
- Can be used on double door configuration
- 



## Security

EN50131-2-6 Grade	2
Tamper Protection	Cover

## Environmental

EN50130-5 class	Class II
IP Rating	3X
Temperature range	-15°C - +40°C

## Housing

Colour	Brown
Material	HIPS
Contact Dimensions (mm)	33 x 22 x 32
Magnet Dimensions (mm)	33 x 22 x 32

## Electrical

Maximum switching voltage (Vdc)	<50Vdc
Maximum switching current (mA)	500
Connection type	Terminal
No. of terminals	4 Screw
Contact type	Normally Closed
Contact Material	Rhodium

## Features

Mode of operation	DP, EOL/FSL
Resistor Type	A, B, D, E & I
Operation Axes (X, Y, Z)	Y, Z,
Pull-in gap (X, Y, Z)mm	15, 9
Suitable for Double Door	Yes
Suitable for Double Pole Sys	Yes
Connection type	Terminal
No. of terminals	4 Screw

## Mechanical

Colour	Brown
--------	-------